

## Document Citation

Title	<b>The glass tower</b>
Author(s)	
Source	<i>Ellis Films, Inc.</i>
Date	1959
Type	exhibitor manual
Language	English
Pagination	
No. of Pages	2
Subjects	
Film Subjects	Der Gläserne Turm (The glass tower), Braun, Harald, 1957



# THE GLASS TOWER

## CAST

Katja Fleming ..... LILLI PALMER  
 Robert Fleming ..... O. E. HASSE  
 John Lawrence ..... PETER VAN EYCK  
 Dr. Bruening ..... BRIGITTE HORNEY  
 Dr. Krell ..... HANS MESSEMER  
 Blume ..... LUDWIG LINKMANN  
 Staatsanwalt ..... GERD BRUDERN  
 Gerichts-President ..... HINTZ FABRICIUS  
 Mrs. Wiedecke ..... ELSE EHSER  
 Wendland ..... WERNER STOCK  
 Policeman ..... EWALD WENCK  
 Schwester Margarethe ..... GABY FEHLING

## CREDITS

Producing Company ..... BAVARIA-FILMKUNST AG  
 Director ..... HARALD BRAUN  
 Music ..... WERNER EISBRENNER  
 Photography ..... FRIEDL BEHN-GRUND  
 Scenery ..... WALTER HAAG  
 Costumes ..... URSULA MAES  
 Book ..... ODO KROHMANN  
 WOLFGANG KOEPPEN

German Version Running Time: 104 minutes  
 English Version Running Time: 92 minutes

An Ellis Films Release  
 An Essex Universal Film Presentation

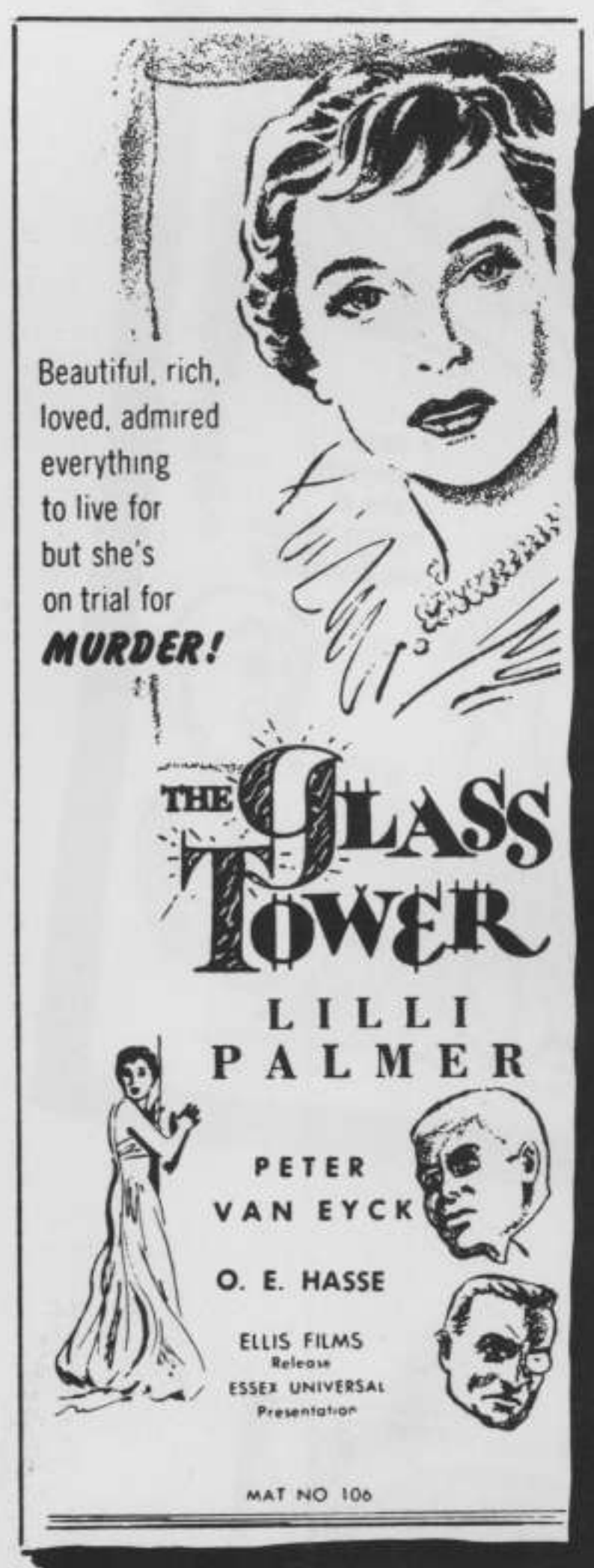
AVAILABLE IN ENGLISH  
 AND IN GERMAN WITH SUB-TITLES

Playwright John Lawrence (Peter Van Eyck) returns from America and tries to locate the actress Katja Fleming (Lilli Palmer). He finds her almost imprisoned in a "Glass Tower", not a fit home for a woman such as this one-time celebrated address. This "Tower" is not a house for happy people, but used for business contacts, agreements and as proof of super-efficiency. Twenty stories high, another Tower of Babel, built as a monument to success by Robert Fleming (O.E. Hasse), a man who knows only glory, richness and luxury. In this tower of glass he has placed Katja to keep her not only in pomp and circumstance but also under guard. For Robert Fleming his wife Katja is expensive property, the confirmation of his success, efficiency and power.

But while building his tower, he forgets the fragility of human happiness. And so John Lawrence enters Katja's life, seeking her to play the lead in his latest play. This invitation to the woman in the glass tower, becomes the door to freedom from her prison. Robert Fleming returns from a business trip and finds his wife, contrary to her promise, again at rehearsal. He finds her with one step out of the glass prison, ready to be herself again. In doing so she begins to free herself from the domination of her husband and to find love for John Lawrence, the man who forced her to make the step.

John Lawrence, who wanted only the actress Katja for his play, finds in their mutual work, that he is in love with the woman. Robert Fleming, however, does not give up so easily. His vanity is hurt and while still living under one roof, he and Katja are forced to disregard respect and hurt one another to the point that Robert Fleming finds out that his wife never really loved him. Even his humility, shown for the first time to Katja, comes too late for she already belongs to the other man.

The lost Katja is for Robert Fleming like a declaration of bankruptcy. If he cannot have her anymore, he must destroy her and thus he plans not only to kill Katja but John and himself. The plot fails, Robert Fleming is the only victim and the District Attorney finds that Katja is the murderess. Only Katja's lawyer Dr. Bruening (Brigitte Homey) and John Lawrence are persistent enough to question the District Attorney's findings, and when a tape recording which a psychiatrist has made of Katja is found stolen and hidden in the house of the late Robert Fleming, the truth prevails and the glass prison opens forever to unite Katja and John.



### ACCESSORIES

- TRAILER
- ONE SHEET IN COLOR
- 40 x 60 BLOWUP
  - 11x14's
  - 22x28's
- STILLS
- MATS
- PRESS SHEETS

**DON VELDE**  
 1475 BROADWAY  
 NEW YORK CITY

**ELLIS FILMS, INC.**

SUITE 2108-2109 TEL.: LO 3-5457

PARAMOUNT BUILDING — 1501 BROADWAY, N. Y. C.



Beautiful, rich, loved, admired... everything to live for... but she's on trial for **MURDER!**



A clever, suspenseful drama of mystery, intrigue and **DEATH!**

**LILLI PALMER**

**THE GLASS TOWER**

**PETER VAN EYCK**  
**O. E. HASSE**





ELLIS FILMS  
Release  
ESSEX UNIVERSAL  
Presentation

MAT NO. 307

A clever, suspenseful drama of mystery, intrigue and **DEATH!**

**LILLI PALMER**

**THE GLASS TOWER**

**PETER VAN EYCK**  
**O. E. HASSE**



MAT NO 107

**LILLI PALMER**

Beautiful, rich, loved, admired... everything to live for... but she's on trial for **MURDER!**

**THE GLASS TOWER**

Mat No. 209

**PETER VAN EYCK · O. E. HASSE**

ELLIS FILMS Release ESSEX UNIVERSAL Presentation

AMERICAN PREMIERE TODAY **72 ST** PLAYHOUSE AIR CONDITIONED  
bet. 1st & 2nd Aves. BU 8-9304




Beautiful, rich, loved, admired... everything to live for... but she's on trial for **MURDER!**



A clever, suspenseful drama of mystery, intrigue and **DEATH!**

**LILLI PALMER**

**THE GLASS TOWER**

**PETER VAN EYCK**  
**O. E. HASSE**





ELLIS FILMS  
Release  
ESSEX UNIVERSAL  
Presentation

MAT NO. 207

**"THE PRODUCTION AND ACTING ARE SUPERIOR!"**  
— Crowther, N. Y. Times

**"THE CLIMAX HOLDS PLENTY OF SURPRISES! First-rate performances!"**  
— Gleason, Herald Tribune

**"EFFICIENT, INTELLIGENT AND SURPRISING! Well acted and directed with cold precision. Mounts to a courtroom climax!"**  
— Winsten, N. Y. Post

**THE GLASS TOWER**

**LILLI PALMER**

**PETER VAN EYCK · O. E. HASSE**

ELLIS FILMS Release ESSEX UNIVERSAL Presentation

AIR COND **72 ST** PLAYHOUSE  
bet. 1st & 2nd Aves. BU 8-9304  
Mat No. 210




**LILLI PALMER**

A clever, suspenseful drama of mystery, intrigue and **DEATH!**

**THE GLASS TOWER**

**PETER VAN EYCK · O. E. HASSE**




ELLIS FILMS  
Release  
ESSEX UNIVERSAL  
Presentation

MAT NO 208

Beautiful, rich, loved, admired... everything to live for... but she's on trial for **MURDER!**



**THE GLASS TOWER**

**LILLI PALMER**  
**PETER VAN EYCK · O. E. HASSE**



ELLIS FILMS Release ESSEX UNIVERSAL Presentation

MAT NO 206